

H&DHOMES

text WYN-LYN TAN

photography WINSTON CHUANG

art direction NICCO LIM



labour of love

THIS GLOSSY, DARK NEST IS THE RESULT OF
A FIRST-TIME HOMEOWNER'S BOUNDLESS
AFFECTION FOR HIS WIFE.

Homeowner Calvin Gan would have a Japanese-style home today if he had his way. Instead, the five-room HDB apartment he shares with wife Jinni is now cloaked in deep hues. "My wife likes dark colours and a mix of romantic and rock – something 'cool'," he says, explaining his change of heart.

The obliging husband was agreeable to a dark, more opulent theme and even went as far as to suggest doing up the entire house in black, since that is one of his wife's favourite shades. "I like a lot of things, and don't mind trying out exotic colours," says Calvin. His only must-haves? "I don't mind anything as long as I have an open long bar and a see-through toilet!"

below Textured details like a customised quilted sofa and a faux-leather TV feature panel add dimension.
left In the study-cum-guest room, roomy drawers under the daybed let guests store their things.

RAISING THE BAR

The hands-on homeowner came up with most of the layout concept and decor ideas, with help from his designer Djohan Arifin in executing them. To create his dream open bar, he decided to hack the walls of the kitchen so as to fit in a >



thefacts | **WHO LIVES HERE?** YOUNG COUPLE CALVIN GAN AND WIFE JINNI
HOME FIVE-ROOM HDB APARTMENT IN BEDOK NORTH **SIZE** 1,184SQF

below Candles add to the ambience of the dusky interior. right There is lots of hidden storage in the open-concept kitchen, from below-counter cabinets to a niche to house the washing machine beside the counter.



whatwelope

DASHING BLACK

THE BLACK THEME IN THIS APARTMENT WORKS, WITH THE USE OF STRATEGIC LIGHTING, TEXTURED MATERIALS, AND WHITE HIGHLIGHTS ADDING DIMENSION TO AN OTHERWISE SOMBRE COLOUR.

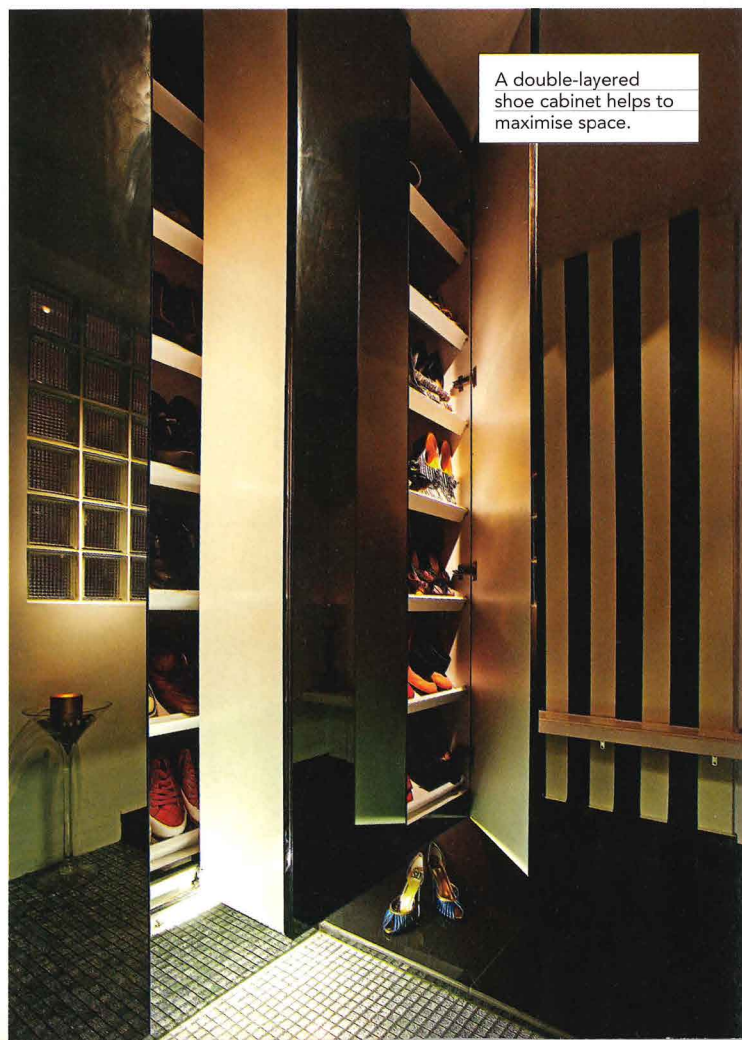
long counter that looks out to the living area. The black granite counter accommodates a sink and extends to a slightly raised dining area for two, where Calvin placed a pair of silver bar stools. A black laminate panel on the ceiling runs parallel to the bar, further accentuating the long counter, while white laminate cabinets below the counter hide all the kitchen paraphernalia.

Calvin, a first-time homeowner, admits he is "very particular" about materials, and did all the legwork in sourcing for tiles and other materials, learning more about them along the way. Being a hairdresser, he has customers from all walks of life – including the building industry, which worked out to his advantage. A customer dealing in wholesale tiles supplied him with the black homogeneous floor tiles that run throughout the flat at a good price, while another customised the bronze quilted sofa and bed at a "special price".


STORE AND MORE

Calvin also provided plenty of storage as he "likes things to look neat, but does not really like to clean the house that often." On the other hand, wife Jinni "house-cleans, but tends to leave and drop things all around!".

One of the main storage areas is the black glass shoe cabinet by the foyer, which houses the >



A double-layered shoe cabinet helps to maximise space.



Vertical stripes on the walls "elongate" the room, while a black laminated panel running parallel to the bar counter visually stretches it.

RICH HUES LIKE MAROON IN THE SOFT
FURNISHINGS ADD WARMTH AND
A SENSE OF RICHNESS TO THIS CHIC FLAT.



The plush velvet bed takes its opulent lines from a chaise lounge, matched by mauve wallpaper framed above it.



whatwelove

GET FRAMED

WALLPAPER IS FRAMED ON THE WALL FOR A THREE-DIMENSIONAL FEEL, AND IS EFFECTIVE AS BOTH A FEATURE WALL AND BEDHEAD DESIGN.

couple's many pairs of shoes. The double-layered his-and-hers cabinet has an outer compartment that holds Jinni's shoes, with Calvin's footwear neatly displayed in a compartment behind. The shoe cabinet also features downlights that illuminate the foyer and highlight the crystal-like mosaic flooring at the entranceway.

The couple's spacious walk-in wardrobe takes up the size of one bedroom and provides more organised storage. The wall between the original master and one other bedroom was hacked to create one expansive bedroom suite, complete >



Look straight into the cosy attached bathroom through sliding glass doors. right A spacious and well-planned wardrobe system keeps all of Calvin and Jinni's clothes organised.

with the walk-in wardrobe and an adjoining full-glass bathroom. "We wanted the feeling of a boutique hotel," he explains of his wish for a plush-looking glass bathroom, where the couple even managed to fit in a 1.5m-long bathtub.

In the middle of the walk-in wardrobe is a cubic storage system built to hold Jinni's jewellery and hair accessories. "My wife buys many accessories, but she keeps them in boxes and ends up not wearing them," shares Calvin. So, he had the island storage built with a clear glass display on top. Slim pull-out drawers underneath keep the rest of the pieces uncluttered and visible.

Calvin is pleased to say his wife "is happy" with the house and that he likes it too, of course. We think it must be a huge reward to present your labour of love to the missus! ●

where to go

DJOHAN ARIFIN TEL: 8112-7721

